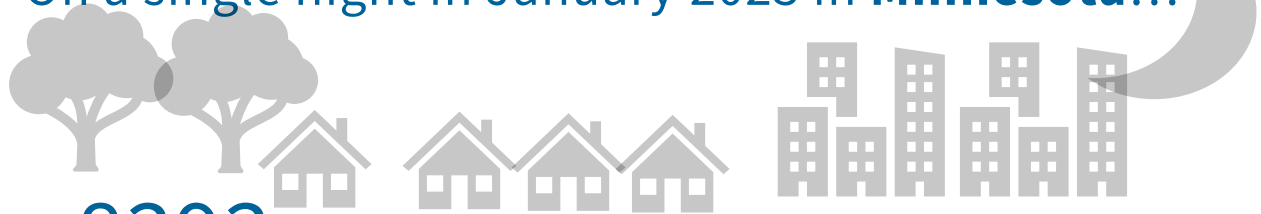
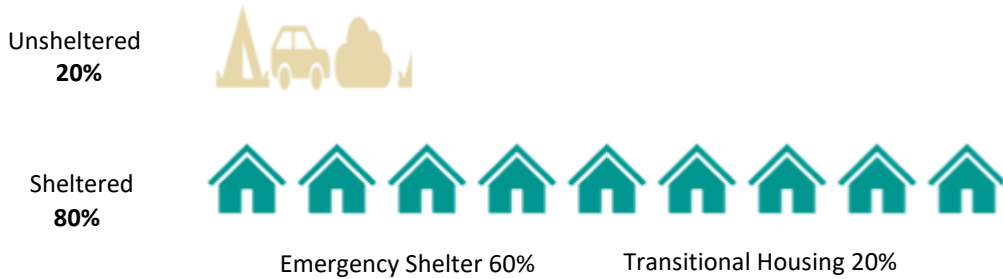


On a single night in January 2023 in **Minnesota...**

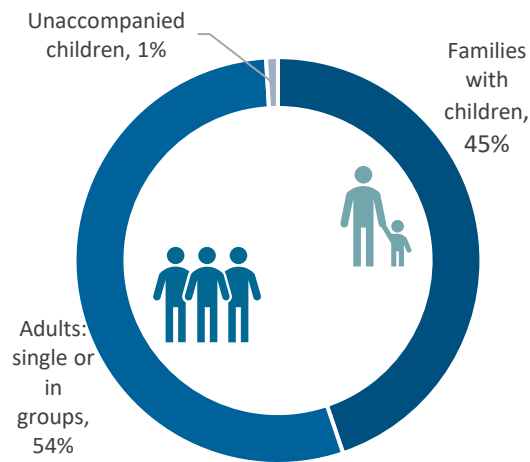


**8393** people experienced homelessness.

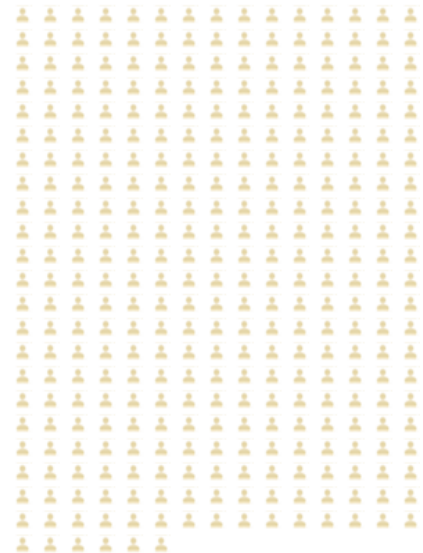
## Where?



## Who are they?

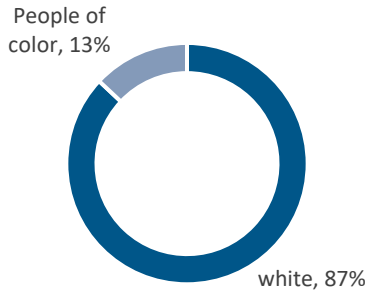


**336 Veterans**

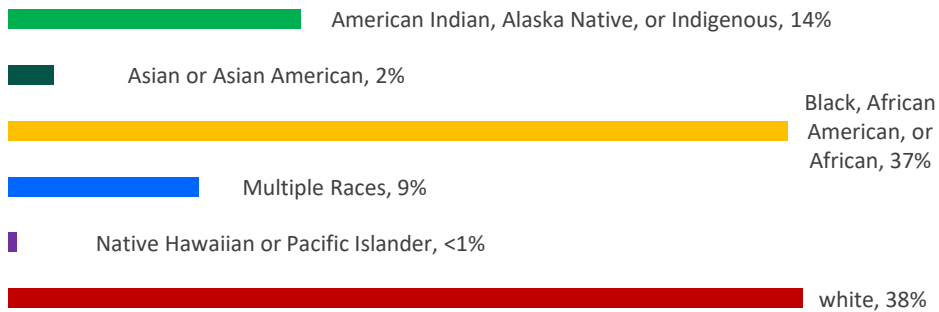
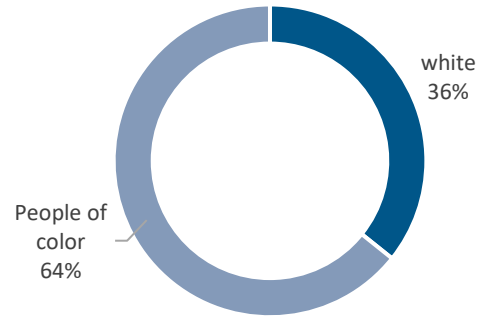


# People of color are disproportionately affected.

Total State Population (2022 Census Estimate)



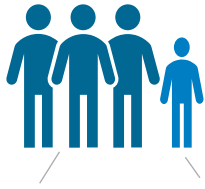
Homeless Population



More than a quarter are **children**.

More than half are **male**.

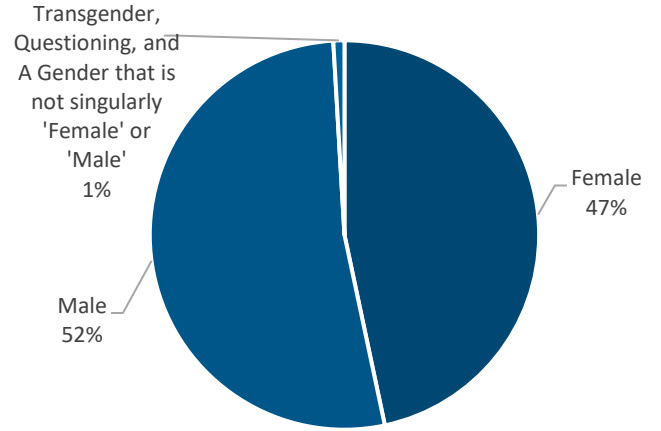
NOTE: Missing demographic data has been extrapolated according to Point In Time Count guidelines from the U.S. Department of Housing and Urban Development



60% Adults  
11% Young adults (18-24)



29% Children



*NOTE: Missing demographic data has been extrapolated according to Point In Time Count guidelines from the U.S. Department of Housing and Urban Development*